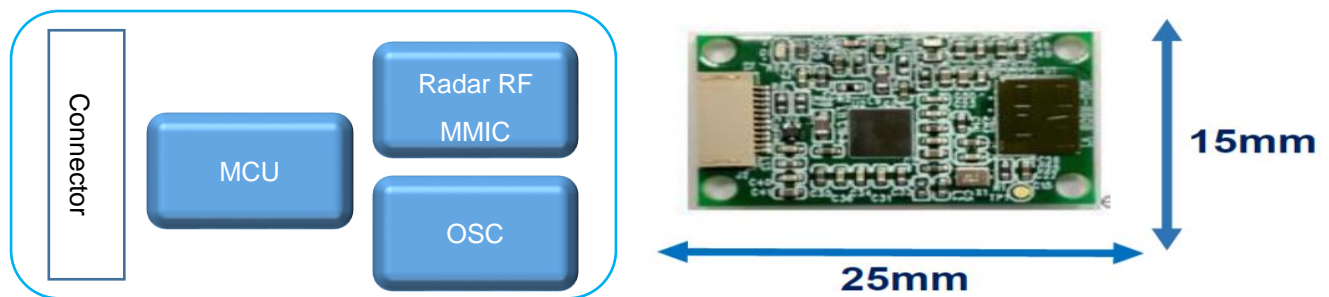


AMEC-R60B-111

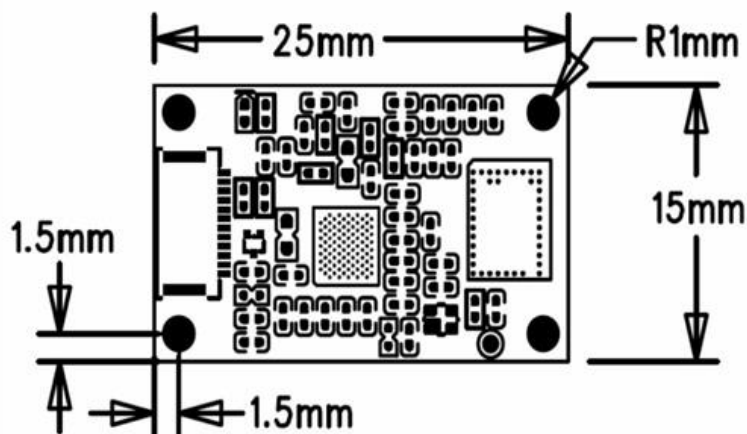
60GHz mmWave Radar Human Detection module

➤ Features

- ✧ The AMEC-R60B-111 is a radar system based on 60GHz mmWave technology and available for **Human Detection** Algorithm.
- ✧ Highly Integration RF MMIC (60GHz mmWave Chip) and 1Tx and 3Rx with AiP(Antenna-in- Package)
- ✧ ARM™ Cortex M4F ; 150MHz, 1024KB RAM, 2048KB Flash
- ✧ Small form factor, 25 x 15mm
- ✧ Rich user interface
 - SPI, I²C, UART, USB(CDC) for user control interface
 - GPIO for external device control



➤ Dimension and PCB foot print

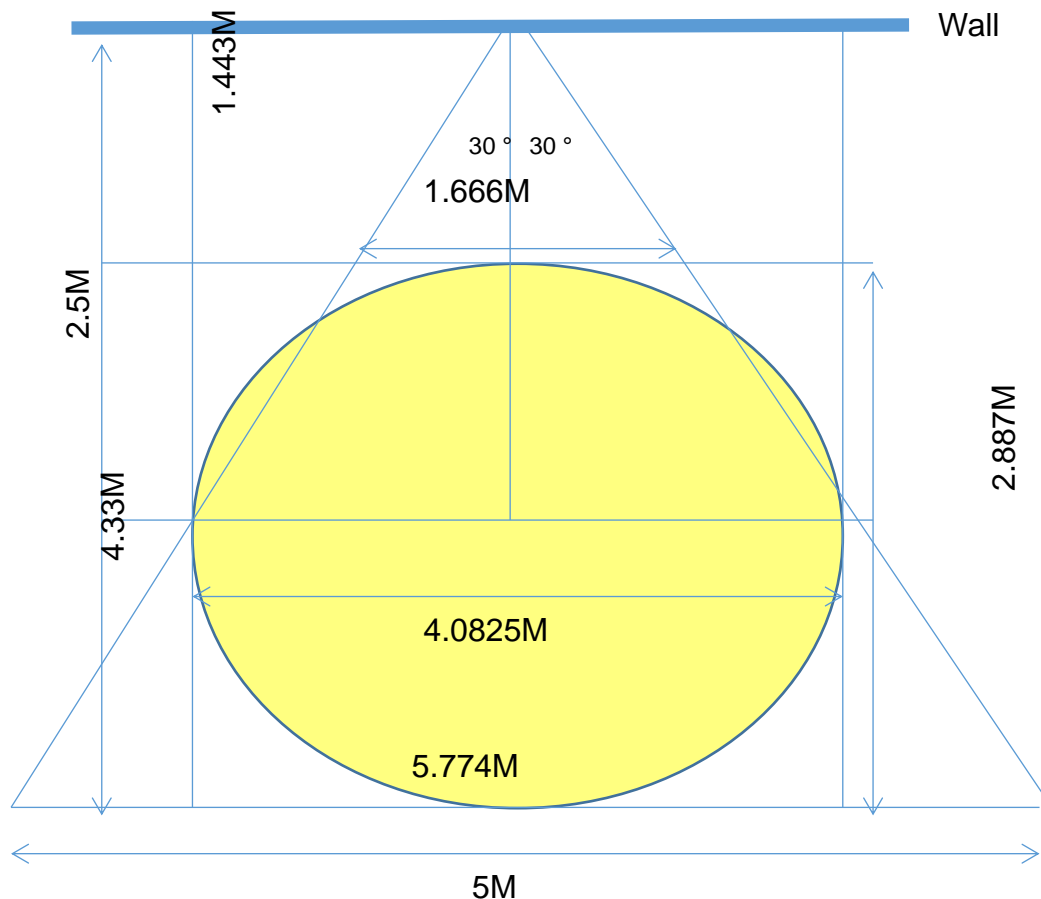


➤ Specifications

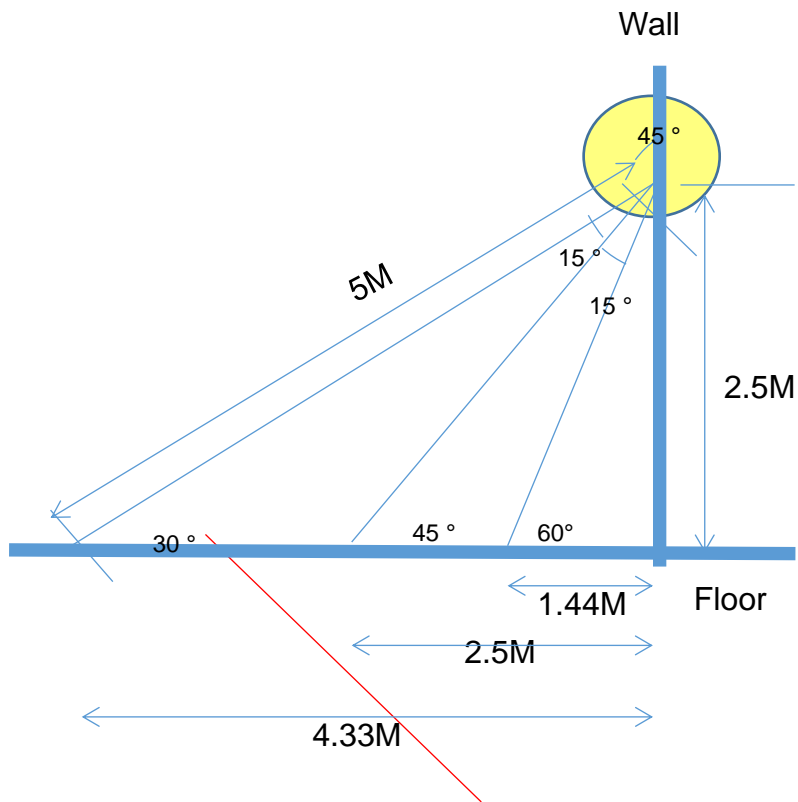
Frequency Band	58.0 ~ 63.5GHz
Modulation	FMCW
Radiation Power	4dm/Typ, 8dBm/Max
Max./Min. Detection Range	9.6m
Range Accuracy	3.75cm
Antenna Beam width - Horizontal/Vertical	65° / 35°
	Azimuth $\pm 45^\circ$
	Elevation $\pm 40^\circ$
Voltage Range	5V \pm 10%
Interface	USB/I2C/SPI/UART, GPIO
Ambient Operating Temp.	-40°C to +85°C

➤ Installation

Top View

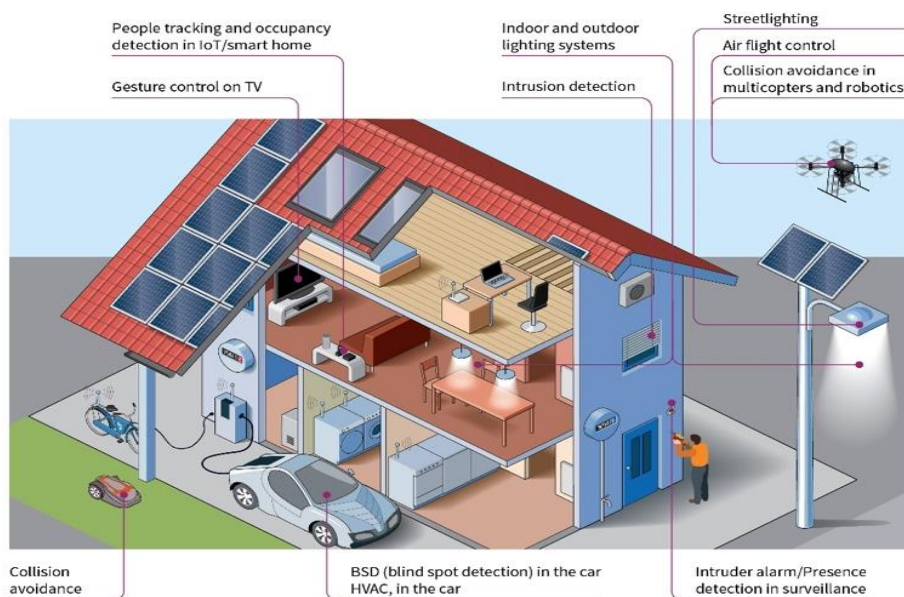


Side View



➤ Applications

- ✧ Smart Building : Door Automation
- ✧ Smart Office : Automatic Light On/Off
- ✧ Smart restroom : Automatic flushing



➤ **Video Demonstrations**

✓ **Tile penetration**

✓ **Light on / off**